



THURCROFT BIG LOCAL



Contents

1. CONTACT US	PAGE - 3
2. BACKGROUND	PAGE - 4
3. THE PARTNERSHIP	PAGE - 5
4. LOCATION	PAGE - 6
5. THURCROFT – THE VILLAGE	PAGE - 7
6. THURCROFT – THE PEOPLE	PAGE - 8
7. WHAT PEOPLE ARE PROUD OF	PAGE - 9
8. CHANGES PEOPLE WOULD LIKE TO SEE	PAGE - 10-13
9. OUR BIG LOCAL VISION FOR THURCROFT	PAGE - 14
10. RESULTS FROM VISIONING EXERCISES	PAGE - 15
11. RESIDENTS CHOSEN PROJECTS/TABLE OF TIMESCALES	PAGE - 16-26
12. 1 MILLION	PAGE - 27
13. BUDGET	PAGE - 28
14. THURCROFT BIG LOCAL COMMUNICATIONS PLAN	PAGE - 29-31
15. SOME THINGS WE HAVE DONE SO FAR	PAGE - 32-33

COVER DESIGN: ROBERT STROBEL OF EXCELL MUSIC MANAGEMENT UK LIMITED

Contact Us

Thurcroft Big Local is based at the Big Local Information Centre, which is located at the following address:-

Big Local Information Centre
Green Arbour Road
Thurcroft
Rotherham
S66 9DB

Telephone: 07964 693527

Email: info@thurcroftbiglocal.org.uk

More information can be found at our website

www.thurcroftbiglocal.org.uk

And on our Facebook page – Thurcroft Big Local

Background

In 2012 the village of Thurcroft was chosen by the Big Lottery to be part of their big local initiative. The aim of this is for the local community to get involved in making their community a better place to live, now and in the future.

The money comes from a £200m national big lottery fund. Where and how this money is spent is entirely up to the local community and will be guided by the partnership board, which is comprised entirely of local residents and people who are passionate about Thurcroft.



This is the Thurcroft Big Local Logo, designed by a local resident.

The Partnership

The Partnership board consists of 14 local residents, one voting Parish Councillor and one non-voting Borough Councillor. The board was recruited by an independent panel. The majority of the board will have been appointed one year in September 2014. A review of the board will be undertaken every September.



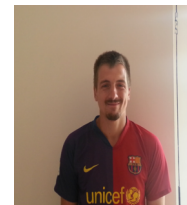
Alan Bucknall
Chair
Local Resident



Kay Mosley
Local Resident



Diane Oxley
Local Resident



Kevin Fordham
Local Resident



Denise Lelliott
Borough
Councillor



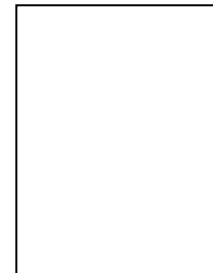
Pam Mitchell
Local Resident



Tim Leach
Local Resident



Tony Simmonds
Local Resident



Cynthia Parr
Local Resident



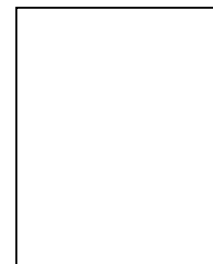
Nathan Lewis
Local Resident



Cath McCartan
Local Resident



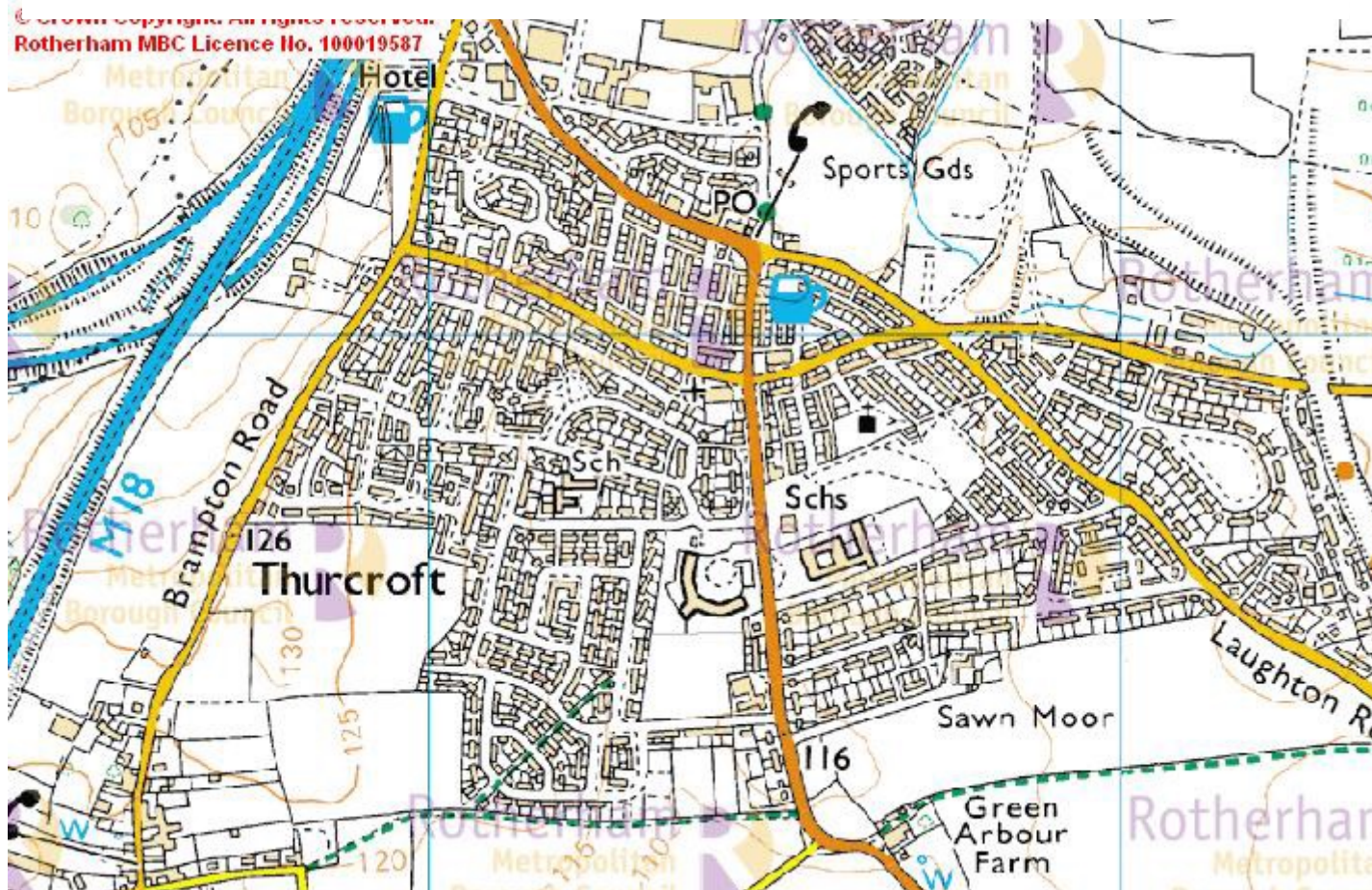
Ann Barrass
Local Resident



A Parish Council
Representative

Location

Thurcroft is a village and civil parish southeast of Rotherham in the Metropolitan Borough of Rotherham in South Yorkshire and has easy access to the M18 and M1 Motorway. The village is surrounded by green belt and farm land.



Thurcroft – The Village

Thurcroft as a village or even as a name does not have a long history. The village is not mentioned in the Domesday Book (1086-7) because it did not come into being until the 19th century. At that time Thurcroft Hall existed and since the Hall was occupied by one of the owners of the colliery which was sunk mid 1909 then the village which was built for the workers became known as Thurcroft. The presence of coal was the single most contributing factor to Thurcroft's development during the 20th century. The opening of the pit resulted in the population growing from next to nothing to 1900 to over 2000 in 1923. By 1947 the pit employed over 2000 men and the Thurcroft Colliery was the main source of employment for all those that lived in Thurcroft. The closure of the pit and the brick yard in 1992 had a massive impact on the village. This impact came across in the visioning we did with the residents and most of them feel Thurcroft has got worse since the closures.

In 2011 there were 2294 properties in the Thurcroft. Of these 472 were rented by RMBC or other housing associations, 398 rented by private landlords or letting agencies and 1354 owner occupied. A new estate of approximately 450 houses is currently being built at the edge of the village.

Thurcroft is located approximately 3 miles away from junction 1 of the M18 and has good transport links being approximately 6 miles from Rotherham, 18 miles from Doncaster, both of which have a railway station and Doncaster Airport. There are many direct buses to local areas. Of the total dwellings in Thurcroft, 662 (29.8%) of households have no cars or vans, 457 (49.7%) of households have one car or van and the remaining 1175 (20.5%) have 2 or more.

Three schools serve the village, the infant school, junior school, which holds academy status and is affiliated to Aston Academy and the Willows school which is a school for pupils with moderate and complex learning difficulties. Like many areas the village has lost some local facilities but it still has a significant number of shops including a post office. Other services/facilities include ACRO Gym, Community Welfare Hall, Christian Fellowship, Parish Church, Scouts Hut, the Village Surgery, Miners Institute and a Library.

Thurcroft – The People

The population of Thurcroft is estimated to be around 5226. Many people have lived in the village all their lives and have family living close by. Of the economically active, 34.4% are in full-time employment, 13.7% in part-time employment and 7.9% are self-employed. 6.5% are unemployed. 24.8% of working age residents receive DWP benefits, 36% of households receive housing or council tax benefit and 27% of children aged 0-15 live in poverty.

The general health and wellbeing of the people in Thurcroft is average with hypertension and obesity being the highest recorded illnesses. Smoking in general seems to be commonplace and many patients suffer with depression.

Crime in 2013 was above the national average. The majority of crime reported in Thurcroft is incidents of anti-social behaviour which in 2012 totalled 121 per 1000 population (the average for Rotherham being 81). However, these could be as minor as a large group of children chatting who have no facilities for socialising.

What People Are Proud Of

BORN HERE

**LOTS OF
FACILITIES**

**MINING
COMMUNITY**

**BRASS
BAND**

**LOCAL
SUPPORT**

COUNTRYSIDE



**BOTTOM
CLUB**

**GREAT BUS
SERVICE**

**COMMUNITY
SPIRIT**

CHURCH

**FRIENDLY
PEOPLE**

**RESIDENT
COMMITMENT**

Changes People Would Like to See

Community Improvements

- Crossing near the doctors /traffic outside the doctors which will be worse when the new development on Laughton Road is completed?
- Pot holes repaired
- Facilities for parking outside the doctors
- More parking on Green Arbour Road
- More dropped curbs
- Free Wi-fi for all the village
- Speed ramps on Brampton Road 30mph speed limit
- Install more seating at the bus stop
- Robust recycling facilities
- More street lights
- Get footpaths sorted walking is very bad
- Employ six young men to keep Thurcroft clean and tidy for a twelve month period for work experience

Community Engagement and Community facilities

- Making the place a better place to live

Environment

- Maintain the village keep it clean and safe
- More trees and flowers in village / flower borders, hanging baskets etc.
- Clean up Thurcroft - clean Streets, pavements and gutters
- Big clean up around Cedric Crescent, snickets between Elgitha Drive, Locksley Drive, Cedric Crescent and Green Arbour Road cleaning. Make improvements to the land at the back of Katherine Road – not sure who owns it but it's a mess!
- Better footpaths
- Clean up dog fouling/dog bins around the village
- Could pit top be made into a walking area – maybe landscaped a little bit to encourage wildlife - "Thurcroft Country Park"
- Bus shelters around doctors end of the village
- Cleaner Parks
- Somewhere for young ones and OAP's to spend time
- More greenery especially by the shops - perhaps some hanging baskets on the lamppost
- Mineral line and pit top clear up and clean-up of Dyke
- Pride in the community

Public Art

- Memorial Statue to mining industry and a Water Feature

Young People Facilities

- Workshop for youths (works)

<ul style="list-style-type: none"> • Resource Centre • Coffee mornings – Bingo and entertainment • Men or Women to help clean all the roads in Thurcroft • Better facilities for young and old • More social group in the daytime for older people • Indoor Play activity • Parties every night and have fun • More local events, galas, fairs and fun days • Chess Club • Big pet days for all pets • Children getting involved and helping with scout hut and other projects • Drop in centre for all ages • Community Cafe/website access • Club/associations, mainly for young people to learn new skills - Possibly aimed at being self sufficient • New Scouts hut • Gala every year, probably with floats and parade, majorettes, band, scouts, fancy dress • Make improvements to graveyard i.e. new gates etc. <p>Education, training and jobs</p> <ul style="list-style-type: none"> • Computer courses • We could train people up in IT • High unemployment - Need more jobs for local people and training support to get people into jobs • Training for employment – stripping motorbikes down 	<ul style="list-style-type: none"> • Youth enterprise • Give young people a chance • Need better facilities for young people -Youth Club not dependent on volunteers • More activities for young children • New park for kids to play safe with fencing • Move equipment in the park, bigger slide. More merry go rounds. Better swings • Play area similar to Laughton Common • Improvements to play park • Play scheme for children in school holidays • Somewhere for children to play safely without feeling threatened by older children • Something for the youths to keep them off the street - Youth Club / provide a meeting place / Drop in centre for young people • Project to educate young people and drug taking • Help for young people – Open up schools after 4:00pm, somewhere for young people to go • Bigger skate park • Majorettes • More events for children I.e. discos etc. • Bouncy castles • Street Dancing • A community park / Gym like Dinnington • Go karting track / Quad bikes / Area for motorbikes – Back of pit offices • Play Centre like Big Tops • Cyber café for children to get together • Dinosaur Park
---	---

Recreational Facilities

- Indoor Swimming pool would be great!
- Gym for everyone. Different days to suit age and commitment. Perhaps shared with a youth club premises
- Cinema & Bingo Hall
- Leisure Centre
- Public Toilets
- More seats on park
- Roller skating park
- Ice skating
- Football pitch with changing facilities
- Field to ride motor bikes on
- Something to be with waste ground, like a walk which people could walk around or something done with cricket pavilion
- Community building
- Notice boards for better advertising of Kids events i.e. discos, parties etc.
- Repair Local Park, side of Spar
- Dog park / Dogs swimming pool
- More flowers beds
- Restore cricket pavilion - with a bar and nice clean recreational area
- Free Wi-fi for the entire village
- Nice cricket pavilion with a bar and nice clean recreational area
- Animal Sanctuary
- A motor cross track at pit top
- Rugby Pitch
- Sporting facilities and leisure activities - football fields / Community gym for all
- Benches installed at Bus Stops

Crime & Community Safety

- More community policing to deal with problems on the main high street in the evenings. More police presence and more warden patrols. More policing at night
- Make dog owner more responsible. Firmer restrictions on dog fouling
- Speed cameras in Thurcroft - Speed awareness signs / Speed camera on Laughton Road
- Residents/volunteers to monitor and control CCTV in areas of need
- Cracking down on drug takers
- Safe place to win trust – Neighbourhood Wardens
- Combat anti-social behaviour

Local Business

- More Shops
- Chip shop on John Street, on Aymer Drive
- More sweet shops
- More Pubs
- No bank – affected shops
- Better shopping facilities
- McDonalds
- Large supermarket i.e. Aldi, some shops in village are expensive

- | | |
|--|--|
| <ul style="list-style-type: none">• Football pitch or Five a side court / Changing facilities for football and outdoor activities. All weather astro turf football pitch, which could be rented out to put money back into the community | |
|--|--|

Our Big Local Vision for Thurcroft

A: Restoration of Community Pride, to make Thurcroft a better, nicer place to live

Cleaning up Thurcroft by tackling issues of:

Litter
Dog fouling
Pavements, gutters, roads
Unkempt residential areas, snickets, footpaths

The former pit site should be regenerated to possibly include:

Country Park
Wildlife Sanctuary
Gardens
Pit History
Public Art
Water Features
Motorbike area

B: Regeneration of the whole community and support to families, unemployed people and those in debt or poverty

Community improvements to address issues relating to:

Access	Community Newspaper
Pedestrian Crossings	Communication
Bus Shelters	Bank or Credit Union
Playground	Citizens' Advice Bureau
Sports Facilities	Food Bank
Debt Counselling	

New Facilities and activities:

Family Centre – Youth – Drop in
Gala – Socials
Training and workshops
IT – Computers
Employment
Education – literacy
Drug Counselling services




C: Greater involvement of children and young people in the creation and development of services and activities

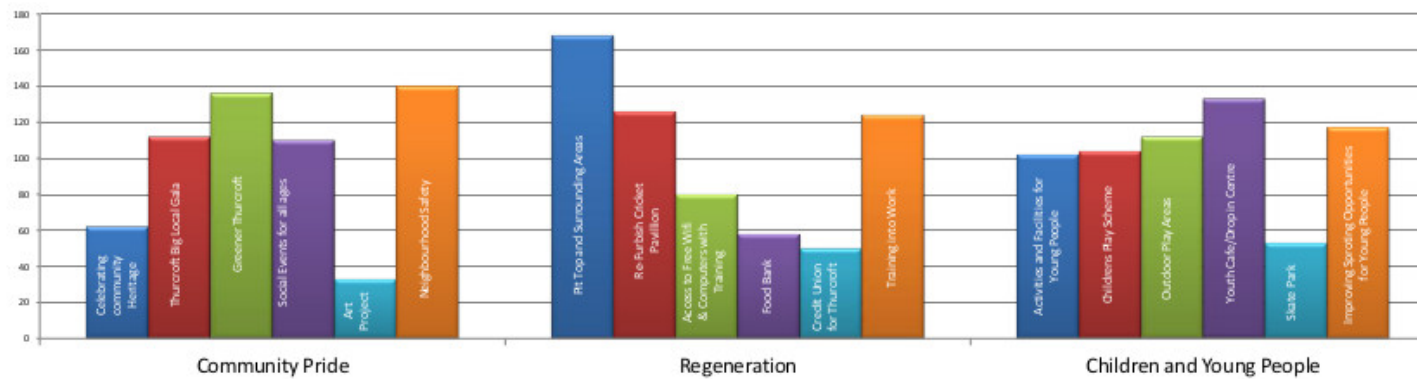
Children and young people's facilities:

More, safer and better infant playgrounds
Holiday play schemes

Bigger skate park
Adventure playground
Youth sports

Results from Visioning Exercises

Thurcroft Results						
	Display Response	Written Response	Online Response	Total		
Community Pride						
Celebrating Community Heritage	8	1	53	62	1	Celebrating Community Heritage
Thurcroft Big Local Gala	10	9	93	112	2	Thurcroft Big Local Gala
Greener Thurcroft	9	11	116	136	3	Greener Thurcroft
Social Events for all Ages	16	6	88	110	4	Social Events for all Ages
Community Art Project	5	1	27	33	5	Community Art Project
Neighbourhood Safety	14	13	113	140	6	Neighbourhood Safety
Regeneration						
Pit Top and Surrounding Areas	19	17	132	168	1	Pit Top and Surrounding Areas
Re-Furbish Cricket Pavillion	20	8	98	126	2	Re-Furbish Cricket Pavillion
Access to Free Wifi & Computers with Training	11	2	67	80	3	Access to Free Wifi & Computers with Training
Food Bank	10	0	48	58	4	Food Bank
Credit Union for Thurcroft	4	4	42	50	5	Credit Union for Thurcroft
Training into Work	14	8	102	124	6	Training into Work
Children & Young People						
Activities and Facilities for young people	10	8	84	102	1	Activities and Facilities for young people
Childrens Play Scheme	12	6	86	104	2	Childrens Play Scheme
Outdoor Play Areas	21	7	84	112	3	Outdoor Play Areas
Youth Café/Drop in centre (11-18yr)	6	16	111	133	4	Youth Café/Drop in centre (11-18yr)
Skate Park	5	7	41	53	5	Skate Park
Improve Sporting Opportunities for Young People	11	9	97	117	6	Improve Sporting Opportunities for Young People



Residents Chosen Projects

As a result of local consultation, Thurcroft Big Local partnership has put in places nine outcomes it wants to see as a result of the £1 million being spent.

Community Pride

The three top projects chosen by residents, in Community Pride are as follows:-

- **Neighbourhood Safety – Project 1**

The majority of residents are not happy with the standard of policing within the community and would like to see a reduction in the fear of crime and anti-social behaviour. The residents would also like to see more dropped kerbs and footpaths which are more disability friendly; there is also a need for more additional road signs and crossings. Residents also feel that CCTV in the area is a necessity. This work will be done by carrying out a community safety mapping exercise involving the local community and engaging an expert to help in the planning of this work. Co-ordination will take place with the Parish and Borough Council. Discussions will be held with a broad spectrum of local people to understand different experiences and needs, particularly the disabled and elderly. Other people to include would be Highways Authority, Highways Agency, Street Pride, PCSO's etc. It is hoped by making improvements there will be a better quality of life for people, less crime and more engagement. Working on this issue could empower people to realise that they can make real changes to the area. It will be monitored to make sure it is working.

Next Steps – To set up a sub group to move this project forward by starting work on the mapping exercise.

How will we know if the project is working? Relationships start to improve, Neighbourhood Watch is introduced and the residents start to feel more happy and safe in their village.

Milestones – A meeting will take place with the existing Crime & Safety group to decide if they want to continue or not. Milestones will then be agreed with the new group.

- **Greener Thurcroft – Project 2**

Residents would like to see a much cleaner Thurcroft for people to live in. Feedback has highlighted the need for cleaner streets and parks, cleaner roads, more bins, weed and litter free areas. Visioning has identified the need for more waste and dog fouling bins to be installed. Community members can get involved along with children from local schools, businesses, parish council, and local community groups/organisations to organise regular community skip and litter pick days throughout the year. Residents would also like to see flower beds and hanging baskets around the village thus giving local people a sense of community pride and making the area a better place for everyone to live in.

Next Steps – To set up a sub group to move the project forward.

How will we know if the project is working? When Thurcroft starts to look and stay cleaner, the residents notice a difference and there is a more positive attitude within the community. Community litter picks are already organised on a monthly basis and they are very successful. The residents can see that they are happening and are making a difference.

Milestones - November 2014 – Open day in the shop to recruit volunteers. January/February 2015 – Litter picks will be organised.

- **Gala – Project 3**

Thurcroft Big Local launched at the Thurcroft Gala in August 2012. Due to the great success of the gala, it was held again in August 2013. Residents would like to see the gala be held on a yearly basis. The gala brings the people of Thurcroft together as a whole community and gives the opportunity to promote the heritage, history and restores community pride, as well as bringing an income back into the Big Local. £3000 was allocated for last year's gala and an income of £700 was made. Local shops, charities and lots of other different agencies get involved in the gala. We know the gala is a success as all residents would like to see the gala held on a yearly basis.

The other projects residents want to see developed are Social Events for all Ages, Celebrating Community Heritage and Community Art Project.

Next Steps – a sub group is already established to organise the gala and other events and this will continue.

How will we know if the project is working? The gala has been held in 2012, 2013 and 2014 and has got more successful every year. The residents want to see the gala happen on a yearly basis, as do the local businesses.

Milestones – Lots of events already planned from December 2014 through to August 2015 including Christmas, AGM, Pie & Pea events, Ice Rink, Easter and the Gala.

Regeneration

The three top projects chosen by residents, in the Regeneration theme are as follows:-

- **Pit Top and Surrounding Areas – Project 1**

The residents would like to see this area transformed into a country park with community facilities and attractions, picnic areas, fishing lakes and more public rights of way. It would be carried out by discussion with local people, businesses and the owners of the site. Other communities may also make use of the regenerated area. If this area was to be regenerated it would provide an attractive walking area, which is currently lacking in Thurcroft and would provide a range of leisure facilities, attractions and social activities in the future and would bring community pride back to the village.

Next Steps – To set up a sub group to include FCC Environmental who would like to put a solar farm on a section of the pit top. If the solar farm goes ahead, FCC have agreed to improve the public right of ways and add other public access as well as picnic areas, a fishing lake, a car park etc.

How will we know if the project is working? By working with FCC and keeping the community updated.

Milestones – January 2015 – Someone from FCC to visit the Big Local and explain what is happening. Community Consultation also needs to take place in the Village.

- **Refurbish the Cricket Pavilion – Project 2**

The community would like to see the Cricket Pavilion refurbished or rebuilt, whichever is the cheaper option, to enable all the local community to use it. This is a project that would take place with the Big Local, local community, Thurcroft Miners Institute and owners of the site, CISWO (Coal Industry Social Welfare Organisation). Activities that people would like to see the Cricket Pavilion used for include youth clubs, luncheon club, children's birthday parties, football clubs, more

cricket teams, children's play scheme, café, and a base for the Big Local and much more. It is hoped that if this when ahead it would create a hub of the community for all ages. In time the Cricket Pavilion could generate a good income.

Next Steps – a sub group has been established and will include the youth, football/cricket representatives and Thurcroft Miners Institute.

How will we know if the project is working? The sub group has met for this first time and other people have now been invited onto this. The group will now look at what facilities are required in the building and appoint an architect to draw some plans. They will also appoint someone to write a business plan to ensure the project runs smoothly.

Milestones - End of 2014 to have tendered for an architect and have visited other similar projects. Early 2015 appointment architect and arrange legal agreement with the Club. Spring 2015 put in for planning application. June 2015 build commences.

- **Training into Work – Project 3**

Residents would like to see the people who live in Thurcroft given help and support to get them back into employment. This would offer support with skills, volunteering and training to enable people to get back into work. Links could be created with local shops and businesses that are currently established in Thurcroft. We would work with the Job Centre and other training providers to provide apprenticeships and work placements. Training would be successful as there would be less unemployed people in the village, it would also give self-esteem to those who are successful in obtaining employment. People's confidence would grow.

It has been identified a variety of support should be available including:-

- Use of computers to carry out job searches
- Access to a range of workshops to improve job specific skills and knowledge
- Group and individual job search sessions
- One to one support to create a bespoke CV
- Help with writing covering letters and completing application forms
- Support and assistance with interview preparation and techniques
- Advice and guidance related to careers and further training
- Access to free Wi-Fi and computers

Next Steps – To set up a sub group to move the project forward.

How will we know if the project is working?

The other projects residents want to see developed are Access to Free Wi-fi & Computers with Training, Food Bank and Credit Union for Thurcroft.

Milestones – January/February 2015 - Meet local businesses about their needs. Identify human resources contacts.

Children & Young People

The three top projects chosen by residents, in the Children & Young People theme are as follows:-

- **Youth Café/Drop In Centre (11-18 years) – Project 1**

Residents feel that having a youth café/drop in centre is really important as it is somewhere that young people of all ages will have somewhere to meet and socialise. This would also be a safe place for young people to voice their opinions and discuss and access help and advice on confidential matters such as sexual health and drug and alcohol misuse, as well as help with homework, job interviews or just a general chat. The café/drop in centre would also address issues and help reduce anti-social behaviour, criminal damage and noise nuisance within the community. A youth café would generate an income and a small charge would be made for the youth clubs, match funding may also be available. A youth leader would be employed and then trainee youth workers taken on who could gain a qualification whilst getting the experience of working with youths. We are currently trailing a youth club on two evenings a week and these are proving to be very successful with the youths, they have said that this is something that they have waited a long time for.

- **Improve Sporting Opportunities for Young People – Project 2**

Residents would like to see improved facilities for local people that are safe and have better access. Ideas they have include an all-weather pitch (AstroTurf), better cricket pitch, tennis courts etc. They would also like to establish a sports club for all ages. Before proceeding with this they will establish accurate information about the current sporting teams and also look at the history of what has happened in relation to sporting provision locally. Partnership work will be carried out with existing facilities to discuss if things can be co-ordinated. Will also liaise with local schools, especially the junior school but also the infant school, cricket club, local authority, rugby club, gymnastics and Gordon Bennett Memorial Hall. Consultation will also take place with other communities. Facilities once set up and established will generate an income. This will hopefully bring the village together, get families involved, and keep young people motivated so they can use their energy in a positive way.

- **Outdoor Play Areas – Project 3**

The residents would like to see more outdoor play areas in Thurcroft for the children and young people to enjoy. They would like to see the existing skate park extended, a second play area for the younger children, a small recreational area on Ivanhoe Road and possibly tennis courts on the land near the Cricket Pavilion. There is a possibility that the Parish Council will fund the new skate park. Play areas will help combat childhood obesity which affects children's emotional and mental health. They will also help build confidence and self-esteem which leads to happier healthier young people. Discussions will be held with young members of the cricket and football clubs, judo club, dance club, gymnastics club, schools and play groups to get their opinions so that everyone will have their say in what they would like to see. There would hopefully be less vandalism and the village would be a happier one.

The other projects residents want to see developed are Children's Play Scheme, Activities and Facilities for young people and Skate Park.

COMMUNITY PRIDE					
Project	What is proposed	Action	Lead organisation and identified partners	Timescales	Budget
1.Neighbourhood Safety	Reduce crime related issues e.g. introduction of Neighbourhood Watch Scheme	Work in partnership with the Safer Neighbourhood Team, particularly in targeted vulnerable areas, to increase reported incidents. Work with the Neighbourhood Watch Co-ordinators and community members to improve communication and co-operation.	Crime and Community Safety Group Neighbourhood Watch SNT, RMBC	Sept 2014- Aug 2017	£2400 over 3 years allocated by crime and community safety group
1.Neighbourhood Safety	Install lighting and CCTV in vulnerable areas	Identify areas made vulnerable due to poor lighting. Pass information to relevant agencies. Work with partner agencies to identify funding for upgrade of lighting and additional installing CCTV.	Crime and Community Safety Group Neighbourhood Watch SNT, RMBC	June 2015	To be costed by partners
2. Greener Thurcroft	Thurcroft in Bloom	Identify relevant partners/businesses and external funding organisations, and examine possible sites for the introduction of floral decorations by positioning hanging baskets on lamp posts along selected highways.	Parish Council, Local Businesses, Big Local Partnership	Feb 2015 onwards	£400 to act as match
2. Greener	Improve the	Replace existing litter bins and dog	Parish Council, RMBC,	Feb 2015 onwards	£2000 for litter

Thurcroft	environmental appearance of the area	fouling bins that are in poor condition. Increase number of litter bins and dog fouling bins in hotspot areas. Increase awareness of environmental issues. Improve the floral decorations.	Streetpride, Big Local Partnership		bins
2. Greener Thurcroft	Litter picks, community skips	Organised skip event days and community litter picks.	Schools, Big Local, Parish Council, local businesses, local residents, Streetpride	Sept 2014 – Aug 2017	£600 for litters picks and publicity
2. Greener Thurcroft	Employability Scheme	Feasibility work and development of employability scheme to support a cleaner village	Thurcroft Parish Council Thurcroft Big Local Other Agencies	Sept 2015 – Aug 2017	£1000 for feasibility work £16000 for project
3. Gala	Thurcroft Community Gala	To host a community gala as an annual event	Gala Sub Group to negotiate and liaise with stall holders and amusements	August 2015	£3,000 pa
3. Second Marquee	Thurcroft Community Gala and other social events	As a resource for events and income raising purchased in association with Kevin Fordham	Kevin Forham Big Local Partnership	Sept 2014	£1347

REGENERATION					
Project	What is proposed	Action	Lead organisation and identified partners	Timescales	Budget
1. Pit Top and Surrounding Area	Pit Top transformed as country park	To work and support partners to ensure full community involvement in design of pit top recreation. Some seed corn funding to enable fuller community involvement.	FCC Environmental RMBC Parish Council Thurcroft Big local	Ongoing	£1000 in 2014 and 2015
2. Refurbish the Cricket Pavilion	Feasibility Study – Regeneration of Thurcroft Cricket Pavilion	Work in partnership with relevant agencies to explore all options for the provision of a “One Stop Shop” – newly built integrated facilities which will include health care for young people, luncheon clubs, cyber cafe, sports provision and youth club.	Big Local Partnership members, RMBC, CISWO, Thurcroft Miners Institute, Parish Council	Feasibility work and planning permission in Year 1. Year 2 build	Cost will depend on feasibility work and match. £5000 for feasibility and planning 2015- up to £400,000 for build ¹
3. Training into Work	Training into work and employability skills	Specialist advice and support with skills around volunteering and training enabling people to get back into work. Access to a range of workshops to improve	RMBC, Job Club, Colin Salt	Sept 2014 – Aug 2017	£2500 Match will be needed

¹ Though £400,000 has been set aside for this major capital work, we will be seeking to find substantial match from partners to make this project a reality so the actual spend could be much less.

		job-specific skills and knowledge, group and individual job search sessions, support and assistance with interview preparation and techniques, advice and guidance related to careers and further training etc.			
--	--	---	--	--	--

CHILDREN AND YOUNG PEOPLE					
Project	What is proposed	Action	Lead organisation and identified partners	Timescales	Budget
1.Youth Café/Drop in Centre	Support for youth facilities and young people	Developing of youth facilities, resources and skilled volunteers with professional facilitation.	Thurcroft Big Local, Miners Welfare, CISWO, Rotherham Youth Service	Sept 2014 – Aug 2017	Youth Work facilitation £1800 Resources £6600 Volunteer Training £2900
2.Improve Sporting Opportunities for young People	Improve facilities for local people, young and old	Establish accurate information about what is available re sporting teams and other provision.	Thurcroft Big Local, Miners Welfare, CISWO, Cricket Club	Jan 2016	£2000
3.Outdoor Play Areas	Identify a second area in Thurcroft which can be designated Play Area	Play areas next to Gordon Bennett. Feasibility work to develop an additional children's play area in another area, possibly Ivanhoe Road with some match for build	RMBC, Parish Council and other agencies/land owners	Feasibility work Jan 2016 Build in 2017	£1000 for feasibility work £4000 as match for build
Other	Play Scheme	Develop childcare provision for working parents in school holidays.	Big Local Members Other childcare organisations in village	Every Summer	£3064 for staff £1532 for resources

INFRASTRUCTURE				
Activity	Action	Lead organisation and identified partners	Timescales	Budget
Community Development Assistant to support partnership development and growth	Community Development Assistant to continue in her role supporting individual partnership members develop projects and the facilitation of meetings and outcomes. This will be for 10 hours a week.	Rotherfed, Thurcroft Big Local Partnership	Sept 2014 – Aug 2017	£19922
Big Local Information Centre	To retain rental of shop (46c Green Arbour Road) for one year as hub of marketing and activity for Big Local	Thurcroft Big Local Partnership, Rotherfed	Sept 2014 – Aug 2017	£7784 to include rent and bills
Office/Organisational Costs	Costs for new ICT and other equipment, stationery, landline, wireless internet and consumables	Thurcroft Big Local Partnership, Rotherfed	Sept 2014 – Aug 2017	£2200 for equipment £6740 for stationery, internet, consumables
Training	Ongoing training for partnership members, volunteers and residents	Thurcroft Big Local Partnership, Rotherfed, other training providers	Sept 2014 – Aug 2017	There is additional funding to £1 million for this
Publicity	Publicity for the work of big local, maintaining the website and getting the message out to households	Thurcroft Big Local Partnership, Rotherfed	Sept 2014 – Aug 2017	£2160
Meetings	Room hire, servicing of meeting and expenses at meetings	Thurcroft Big Local Partnership, RotherFed	Sept 2014 – Aug 2017	£960

Small Community Grants	Small community grants to encourage community groups to flourish and develop in the village. 15 grants of £200 per year to groups and 5 grants of £200 per year to support individual entrepreneurship	Thurcroft Big Local Partnership, Rotherfed	Sept 2014 – Aug 2017	£12000
------------------------	--	--	----------------------	--------

£1 million

All financial decisions will be made by the Thurcroft Big Local Partnership. This budget will be monitored and updated by the Partnership at least once every 6 months. Any changes and alterations will need to be approved by the Partnership. Progress with the Plan will be fully undertaken once every year.

Thurcroft Big Local Partnership will create lasting value with the £1 million ensuring projects are six times the value of what has been invested. Where possible, projects will attract cash matched funding from partners and other funders . We also value the enormous amount of volunteer time that drives and sustains big local projects in Thurcroft .

Our trusted organisation RotherFed will help us facilitate many of the projects. There will be different lead bodies for some of our projects. RotherFed has the financial controls required to do this effectively.

Theme	Project Activity	Project Items	Year One		Year Two		Year Three	Total	Subtotals	% of Emilli	Volunteer Led?	
Community Pride			1-6	7-12	1-6	7-12						
Key Projects	Neighbourhood Safety	Crime and Safety Group	£400	£400	£400	£400	£800	£2,400			Yes	
		Thurcroft in Bloom	£0	£400	£0	£0	£0	£400			Yes	
	Greener Thurcroft	Litter Bins, Skips etc	£0	£0	£2,000	£0	£0	£2,000			Yes	
		Litter Picks	£50	£50	£50	£50	£100	£300			Yes	
		Publicity	£100	£100	£100	£0	£0	£300			Yes	
		Employment Scheme - feasibility work	£0	£0	£1,000	£0	£0	£1,000			???	
		Employment Scheme	£0	£0	£0	£8,000	£8,000	£16,000			???	
	Thurcroft Big Local Gala	All Gala Arrangements	£0	£3,000	£0	£3,000	£3,000	£9,000			Yes	
		Second Marque	£1,347	£0	£0	£0	£0	£1,347			Yes	
	Social Events for all Ages	Various Events	£750	£750	£750	£750	£1,500	£4,500			Yes	
Other Activities	Celebrating Community Heritage		£0	£0	£0	£0	£0	£0				
	Community Arts Project		£0	£0	£0	£0	£0	£0				
SUBTOTALS									£37,247	3.72%		
Regeneration												
Key Projects	Pit Top and Surrounding Areas	Feasibility and Partnership Working	£0	£0	£500	£0	£500	£1,000			No	
	Reburbish Cricket Pavilion	Architects and planning fees etc	£2,000	£3,000	£0	£0	£0	£5,000			Yes	
		Build costs	£0	£0	£400,000	£0	£0	£400,000	(see note 1)		Yes	
	Training into Work	Job Club	£500	£500	£500	£500	£500	£2,500			No	
Other Activities	Access to Free Wifi, Computers and Training		£0	£0	£0	£0	£0	£0				
	Food Bank		£0	£0	£0	£0	£0	£0				
	Credit Union		£0	£0	£0	£0	£0	£0				
SUBTOTALS									£408,500	40.85%		
Children & Young People												
Key Projects	Youth Café/Drop in centre (11-18yr)	Youth Work Facilitation	£3,000	£3,000	£3,000	£3,000	£6,000	£18,000			Yes	
		Resources	£1,500	£1,200	£1,100	£1,000	£1,800	£6,600			Yes	
		Volunteer Training	£2,000	£300	£150	£150	£300	£2,900			Yes	
	Improve Sporting Opportunities for Young People	Next to Pavilion	£0	£0	£0	£2,000	£0	£2,000			???	
		Outdoor Play Areas	Near Gordon Bennett	£0	£0	£0	£0	£0	£0			No
			Other Areas of Village- Feasibility	£0	£0	£0	£1,000	£0	£1,000			???
		Other Areas of Village- Build Contribution	£0	£0	£0	£0	£30,000	£30,000			???	
		Play Scheme	Summer Playscheme - Staff	£0	£1,000	£0	£1,020	£1,044	£3,064			Yes
			Summer Playscheme - Resources	£0	£500	£0	£510	£522	£1,532			Yes
Other Activities	Activities and Facilities for Young People		£0	£0	£0	£0	£0	£0				
	Skate Park		£0	£0	£0	£0	£0	£0				
SUBTOTALS									£65,096	6.51%		
Infrastructure												
	Community Development Assistant	10 hrs a week	£3,160	£3,160	£3,318	£3,318	£6,966	£19,922			No	
	Big Local Information Centre	Rent, services and insurance	£3,892	£3,892	£0	£0	£0	£7,784			No	
	Office/Organisational Costs	Equipment Costs	£2,200	£0	£0	£0	£0	£2,200			No	
		Stationery, phone, internet, consumable	£890	£890	£1,240	£1,240	£2,480	£6,740			No	
	Training	For partnership and volunteers	£0	£0	£0	£0	£0	£0			No	
	Publicity	Posters, publicity	£360	£360	£360	£360	£720	£2,160			Yes	
	Meetings	Room hire, servicing, expenses, etc	£240	£240	£120	£120	£240	£960			No	
	Small Community grants	20 x £200 per year	£2,000	£2,000	£2,000	£2,000	£4,000	£12,000			Yes	
SUBTOTALS									£51,766	5.18%		
TOTALS			£24,389	£24,742	£416,588	£28,418	£68,472	£562,609	£562,609	56%		
Note 1:Though £400,000 has been set aside for redevelopment of cricket pavilion, we are anticipating that we would get substantial match from other partners towards these costs												

Thurcroft Big Local Communication Plan

The Thurcroft Big Local Partnership recognises the critical role communications plays in the Big Local Plan. At our meeting in May 2014 we put together a list of the organisations we needed to link with prioritising those that were most important.

1. Key Organisations

The organisations we need as a priority to develop strong links with this year are:

Thurcroft Parish Council

The Parish Council will be a key partner in some of the projects, they have direct interests in key regeneration initiatives in the Village including plans for a recreational area on the pit top, the development of play and sports facilities, interests in projects that can help clean up the village and some possible public art projects. The parish precept is a potential match for future projects and provides regular income for long term sustainability.

Thurcroft Miners Institute

Members and committee at the Thurcroft Miners Institute have embraced the principles of Big Local demonstrated by the joint work to make the Thurcroft Gala a success. The Miners Institute and CISWO will be key partners in developing the Pavilion as a sustainable facility in the village.

Rotherham Borough Council

The Borough Council is a key partner provide expertise and support at all levels with Big Local. The community development support of the Area Partnership Team will continue to be a major asset as will be maintaining links with other services including Youth Service, Housing Services and Streetpride.

Thurcroft Welfare Community Hall

Big Local is continuing to liaise and establish more links with the Institute with aspirations of developing joint projects in the future.

2. Creating Linkages

Young People/Children

Children and young people are the future of our village. We will strength our links with local schools, continue to work with youth services and develop our own capacity to work with young people and children through leading on our own activities.

Businesses

We will work with local businesses, the Federation of Small Businesses, UnLtd and other partners to regenerate our village enabling apprenticeships, jobs and helping creating opportunities for Thurcroft people. We will continue to liaise with both chemists and the doctors.

Our local shops are key and important partners we would wish to continue to work and liaise with.

Organisations and groups

We will liaise with organisations and groups both within and outside the village. We will liaise with credit unions, advice organisations and other providers. We will work with groups representing all different interests including young and old. We will create a contacts list of all the local groups in the village.

Residents and Volunteers

Our greatest resource is our residents and volunteers and we will continue to reach out and communicate with everyone in Thurcroft ensuring they are part of Big Local. The Information Centre, our newsletters and flyers will continue to be delivered to households to ensure everyone is included.

3. Communication Methods

We agreed to use a wide mixture of methods to communicate Thurcroft Big Local, many of which we have already used.

Word of mouth, events and activities will continue to be central to what we do. The social events provide an important means of communication and sharing progress of the Plan. The Big Local Information Centre will continue to act as an information hub in the centre of the village. We will also continue to use banners, posters, newsletters, the website, social media, mailchimp emails and press releases to communicate. Our noticeboards around the village continue to be refreshed sharing progress with residents. We have at least one newsletter that goes to all households each year to keep them informed of what we are doing.

4. The Work of the Partnership

Thurcroft Big Local Partnership meetings are all open to all residents of the village and are held on the first Monday of every month presently at Arbour Drive Community Centre. Only members of the Partnership can vote but everyone is welcome to attend. Agendas and minutes of these meetings are always on line on both our website and Facebook page. It is the Partnership's intention that everyone in the community will know what is happening and will be given the opportunity to get involved.

4. What We Will Do

We agreed to create:

- A booklet with all the groups and organisations within the village
- A Thurcroft Big Local presentation we can take to organisations and partners to explain what we are doing.

Some of the things we have done so far



Onesie Party (organised by the Welfare Hall)



Pie & Pea Event



Play Scheme



2013 Gala



Litter Pick



Winter Wonderland Event



Visioning Session



Christmas Light Switch On



World War I Tea Dance Event



Easter Event